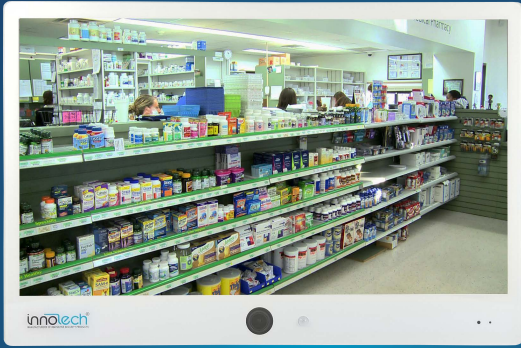


# EXM027IP2W-24V



## 27" LED PVM, Integrated 2MP IP Camera with Motorized Zoom Lens, SD DVR & Notification LED

- 27" LED Backlight Display
- White Metal Case with Acrylic Bezel (Also Available in Black) Integrated 2MP IP Camera with 2.8-12mm Motorized Zoom Lens Control Zoom & Focus with Joystick on PVM or Remote Login
- Motion Detection
- Programmable Notification LED
- BNC Video Output for Connection to DVR or Other Appliance
- 24VDC Power Supply Included
- Unified Remote Control
- Also available in black (EXM027IP2)

Integrated 2MP IP Camera With 2.8-12mm Motorized Zoom Lens  
Control Zoom & Focus with Joystick on PVM or Remote Login  
Programmable Notification LED  
Available in Black or White

### LCD Display

Model	EXM027IP2-24V (Black), EXM027IP2W-24V (White)
Size	27"
Resolution	1920x1080
Brightness	350cd/m2
Contrast	3000:1
Response time	5ms
Display Color	16.7M
View angle	89/89/89/89
Interface	1xVGA, 2xHDMI, BNC out, 1xSD slot 1xUSB, 1xRJ45, Audio in/out
PIP/POP	No
3D noise reduction	Yes
Mul t i Languages	Yes
Power	24VDC Power Supply Included
Operation Temp	-0°C~50°C
VESA size	100x100mm
Weight	12.8kgs (28.22 lbs)

### IP Camera

Sensor	2.4 Megapixel Progressive Scan
Resolution	1920x1080 (1984x1225)
Video output	RJ45
Minimum Illumination	0.1 Lux (Color) (0.01Lux B/W)
Compression	H.265, H.264, MJPEG
Compliance	Latest ONVIF
Lens	2.8-12mm Motorized Zoom & Autofocus
Recording	Remote FTP , TCP/UDP CMS, RTSP
Network Protocol	HTTP, HTTPS, TCP/IP, UDP/IP, RTSP, DHCP, NTP, PPoE, Unicast, Multicast

### Dimensions

