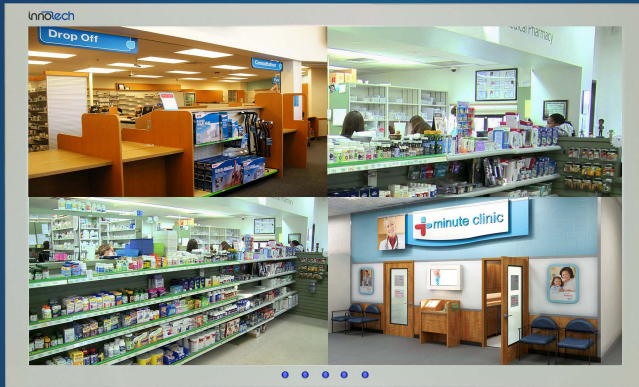


EXM027SMWQ-24V



Quad 2x2 Display Mode

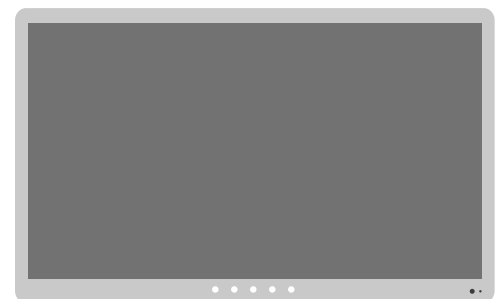
27" Quad Camera Display LED PVM, 1080p, Flashing Notification LEDs, SD Card Reader

- ✓ 27" LED Backlight Display Uses 40% Less Power
- ✓ White Metal Case with White Acrylic Bezel
- ✓ Features Quad 2x2, Split Screen, PIP & Full Screen Display Modes
- ✓ SD Card Reader for Media Presentation
- ✓ Motion Activated Camera Pop Up (POP) During Media Playback
- ✓ Flashing LEDs for Maximum Attention
- ✓ 4 x BNC Video Inputs for Quad Camera Display
- ✓ Compatible with Analog Cameras & IP Cameras with Analog Test Monitor Outputs (i.e., Innotech EXCA233IP2SMx Series IP Cameras)
- ✓ Smart Module BNC Video Output for Connection to DVR or Other Appliance
- ✓ 24VDC Power Supply Included

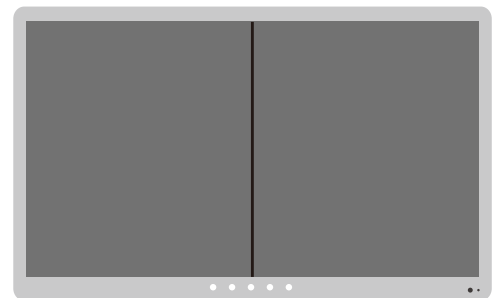
Specifications

LCD Display	Description
Model	EXM027SMWQ-24V
Size	27"
Resolution	1920x1080
Brightness	350cd/m2
Contrast	3000:1
Response time	5ms
Display Color	16.7M
View angle	89/89/89/89
Interface	1xVGA, 2xHDMI, 4xBNC In, 1xBNC Out 1xSD Card Reader, 1xUSB
Camera Compatability	Analog Cameras & IP Cameras with Analog Test Monitor Outputs (i.e., Innotech EXCA233IP2SMx Series IP Cameras)
Display Modes	Quad 2x2, Split Screen, PIP & Full Screen Display
3D Noise Reduction	Yes
MTBF	40,000 Hours
Multi Languages	Yes
Sequential Flashing LEDs	Yes
Power	DC24V/Less than 40W (Power Supply Included)
Operation Temp	0° C ~ 50° C
VESA Mount	100x100mm & 200x200mm
Weight	12.8kgs
SD Card Reader	Description
Media Format	AVI, MOV, MP4, 3GP, MPG, VOB, DAT, WMV, ASF, JPEG, BMP, MP3, WMA
Max Resolution	1920X1080@30fps
Video Mode	PAL/NTSC
Max Support Volume	32GB
Max stream	15Mbit/s

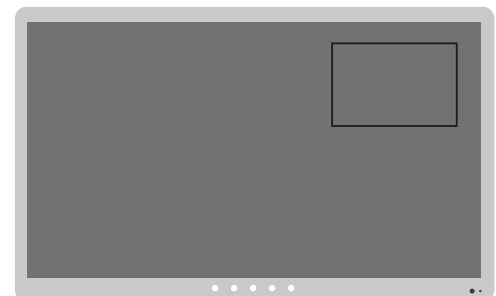
Display Modes



Full Screen



Split Screen



PIP